

# Check Valves

Copper check valves are designed to allow flow in one direction only. They are used in refrigeration, air conditioning and heat pump system.



**Internal components seat or "check" preventing flow back through the valve:** Check valves can be used in liquid, discharge or suction lines.

## Benefits

- **Stainless steel ball valve or soft seat valve with neoprene O-ring ensure very low leakage and high corrosion resistance.**
- **Product with springs can be installed in vertically and with an angle of 30° from horizontal positions.**
- **FS series are without spring**
- **SF series are with spring**

## Installation

Vertically installation only for check valves without spring, flow arrow must be pointing upwards. Check valves with spring can be installed vertically, the flow arrow must be pointing upwards or pointing downward to a maximum of 30° below horizontal position. PCV version (Soft seal) and CV without spring: Vertically installation only CV series with spring can be installed vertically with an angle of 30° from horizontal positions.

## Specifications

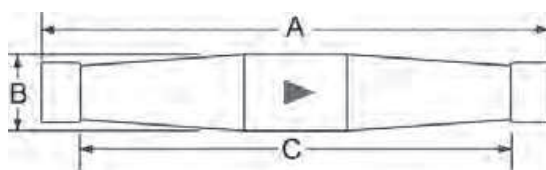
<b>Max Working Pressure</b>	<b>52 bar (CV)</b>
Temperature Range	-40°C up to +150°C

**Approvals:** PED 97/23/EC  
 UL file no. SA- 3604 (CV range)  
 UL file no. SA- 8571 (274-- range)  
 CSA certified File No.-LR87950 (274-- range)

## Technical Data

Part Number	Model UL	Connection ODF Inch	Dimensions (mm)			Liquid Flow capacity (1)				
			A	C	B	R22	R134a	R407C	R410A	R404A R507
CV4-6FS-6FS	3/8F	3/8	95.3	76.2	12.7	12.3	11.3	12.0	12.0	8.1
CV5-8FS-8FS	1/2F	1/2	95.3	73.2	15.9	22.5	20.4	21.8	22.2	14.8
CV7-10FS-10FS	5/8F	5/8	114.3	88.9	22.2	42.2	38.3	40.8	41.5	27.4
CV9-14FS-14FS	7/8F	7/8	114.3	88.9	28.7	87.2	79.1	84.1	85.5	56.6
CV11-18FS-18FS	1-1/8F	1-1/8	127.0	101.6	35.1	228.6	207.9	221.2	225.1	148.4
274243-00	PCVS25	5/16	88.9	71.4	13.3	10.0	9.0	10.0	10.0	7.0
274243-01	PCVS25	3/8	88.9	71.4	13.3	13.0	12.0	13.0	13.0	9.0
274243-03	PCVS25	1/2	88.9	78.7	13.3	17.0	15.5	17.0	17.0	11.5

(1) Liquid capacities are published in accordance with ARI 710-86 standard.  
 Te = -15°C, Tc = 30°C, Δp = 0.07 bar



For all requests, consult your nearest Parker Sporlan Wholesaler or contact us on: [racecustomerservice@parker.com](mailto:racecustomerservice@parker.com) / [www.parker.com/race](http://www.parker.com/race)

